



Hari's Chalets no.5

überreicht durch:

CONTACT groups.ch
Ferienhäuser und Hotels für Gruppen
Postfach, CH-4410 Liestal
Tel. +41-(0)61 926 60 00
Fax +41-(0)61 911 88 88
www.groups.ch



Location and surroundings

This section was a later addition to the original farmhouse which dates from 1805. The location in Boden is conveniently central. Generous use of timber provides a typical homely chalet atmosphere. In addition to the spacious shared lounge which can be divided by a sliding wall, the chalet offers excellent, fully-furnished accommodation with modern sanitary facilities and a central heating system supplying plenty of hot water and warmth. Next to the chalet is a large playing field a barbecue area, table tennis table and plenty of space for fun and games or simply relaxing. 8-10 cars can be parked around the chalet. Hari's Chalet No. 6 is at the rear of the house and both sections can be linked by a connecting door if required. Each section is otherwise completely self-contained.

Beds: to sleep a total of 35 persons

Room layout:

- 1 room to sleep 2 (single beds)*
- 2 rooms to sleep 4 each (bunk beds)*
- 2 rooms to sleep 8 each (bunk beds)*
- 1 room to sleep 9 (mattresses)*

Each bed/bunk has a pillow and quilt/duvet (please bring own sleeping bag or bedlinen). All rooms have a washbasin with hot and cold water. ♿ These rooms and areas have wheelchair access.

Room layout (plan on back):

Ground floor:

- 1 communal lounge ♿ for 60 persons with outside entrance and table football
- 1 bathroom ♿ with WC, shower and washbasin
- 1 room with 2 single beds, ☎ and desk ♿ *
- 1 storage room with shelf unit and 280-litre refrigerator
- 2 separate WCs, washbasins and cleaning cupboard

Upper ground floor

- 1 entrance and hall
- 1 separate WC
- 1 shower cubicle
- 1 room to sleep 8 (bunk beds) *
- 1 room to sleep 4 (bunk beds) *

Kitchen equipment

- 1 electric cooker with 6 hotplates
- 1 GN 1/1 hot-air fan oven
- 1 sink with double basin
- 2 fridges 150 & 280 litres
- 1 deep-freezer 80 litres
- Mixer, bread-slicer, coffee machine, kettle
- Dishwasher
- Cutlery for 60 persons
- Ample pots and pans

Upper floor

- 1 separate WC
- 1 shower cubicle
- 1 room to sleep 8 (bunk beds) *
- 1 room to sleep 4 (bunk beds) *

Attic floor (low headroom)

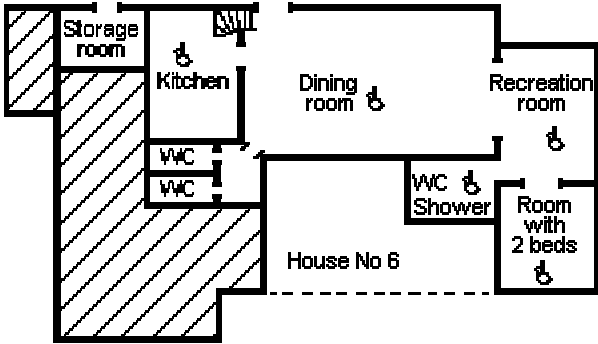
- 1 room to sleep 9 (mattresses) *

Additional facilities and services

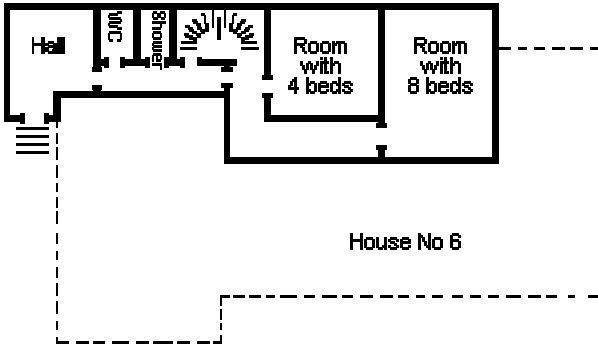
- Telephone in chalet (analogue Internet connection possible)
- Games chest
- Slide projector, video, DVD, TV, flip chart and overhead projector available for hire
- Table-tennis table and table football
- Project folders for schools
- Summer adventure weeks
- Meals delivery service
- Bad weather options

Hari's Chalets no. 5

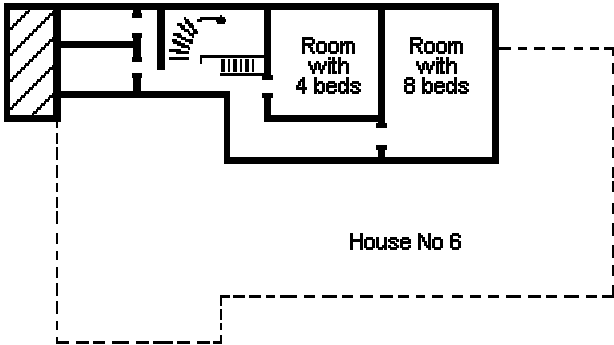
Ground floor



Upper ground floor



Upper floor



Attic floor (low headroom)

